

2.1.1. Dimensions megatap II

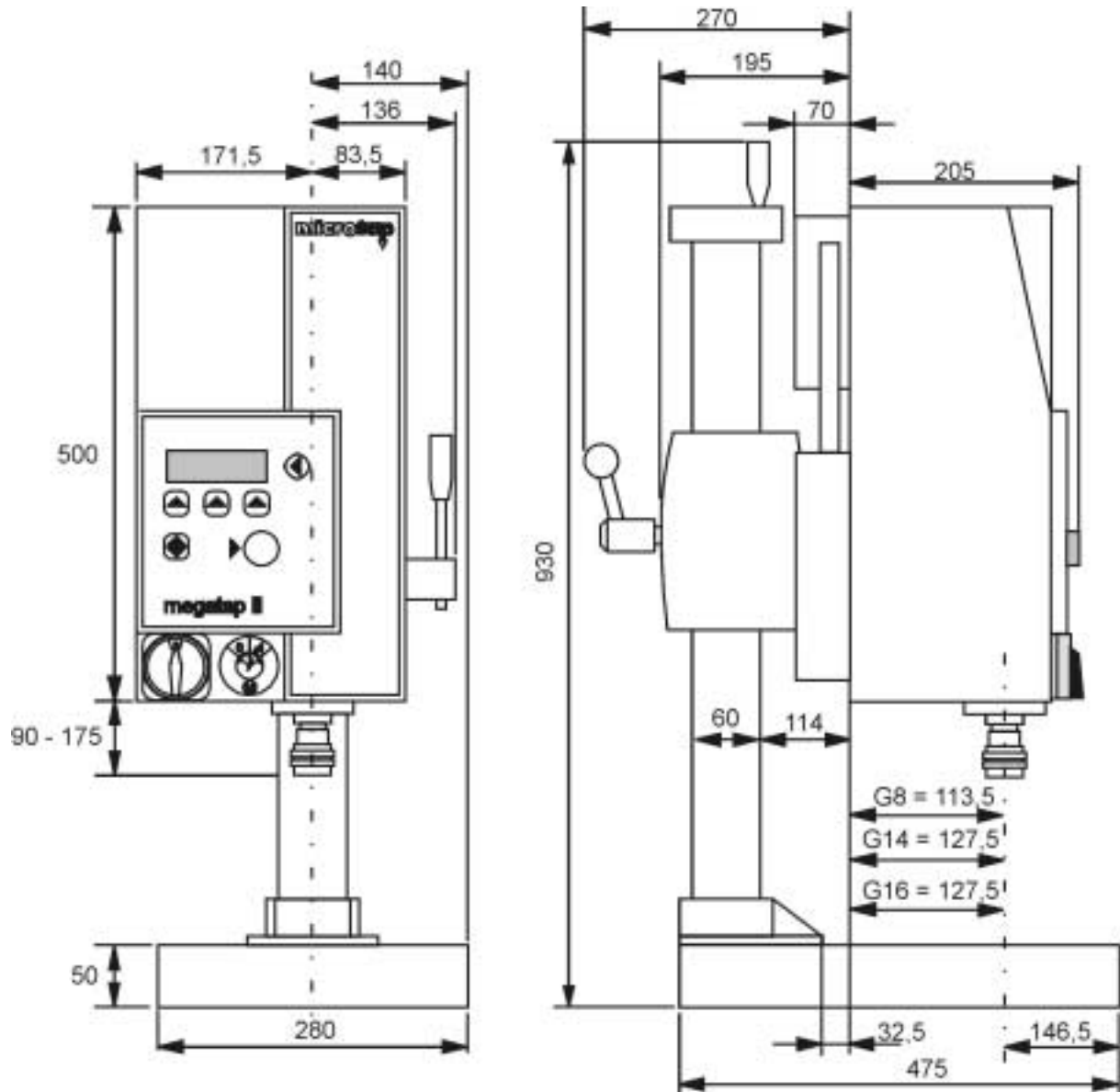


Fig 2-1 Dimensions megatap II / jobtap / labtap (unit: mm)

2.1.2. Dimensions microtap II

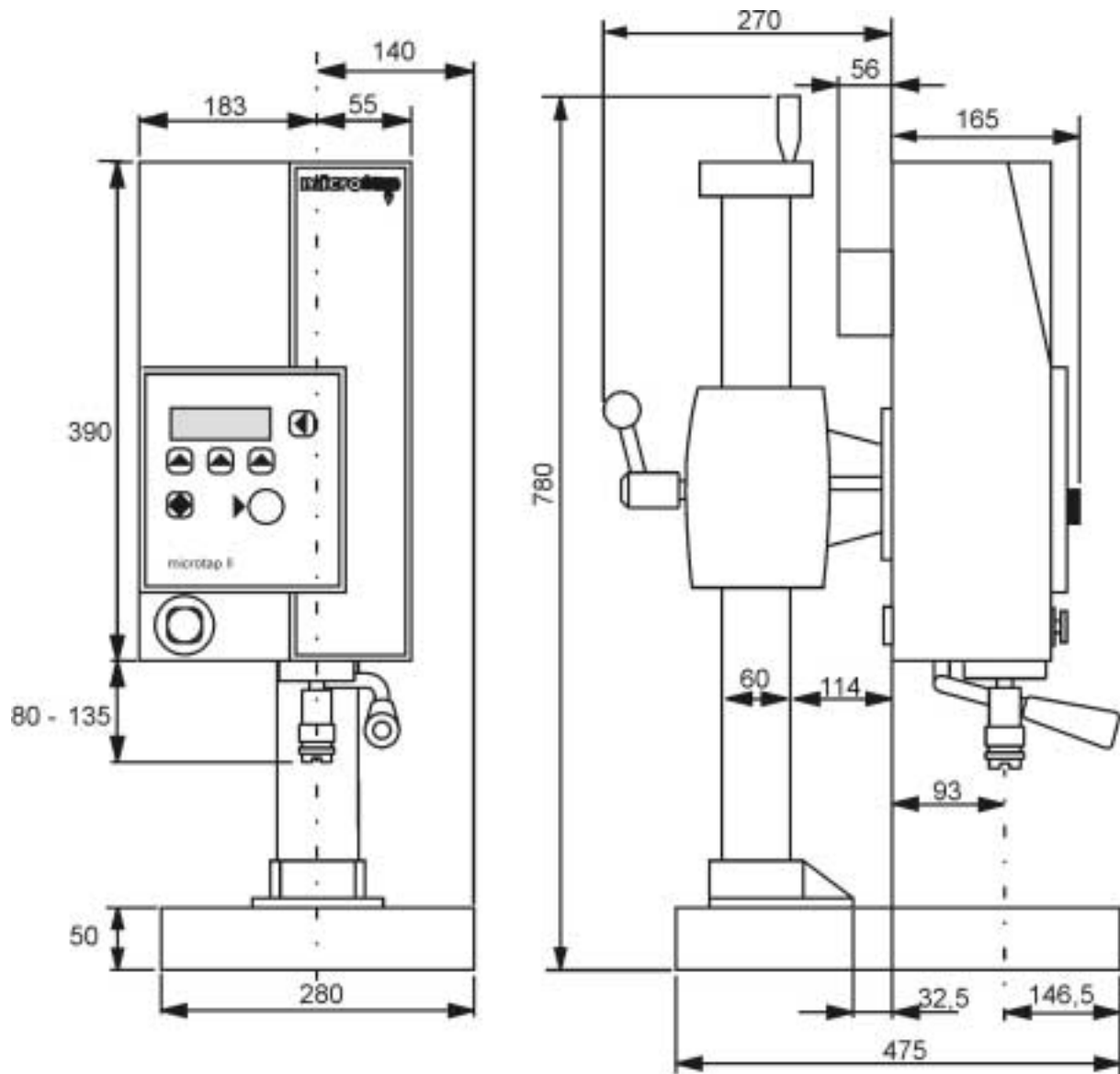


Fig. 2-2 Dimensions microtap II / jobtap / labtap (unit: mm)

### 2.1.3. Dimensions base plate

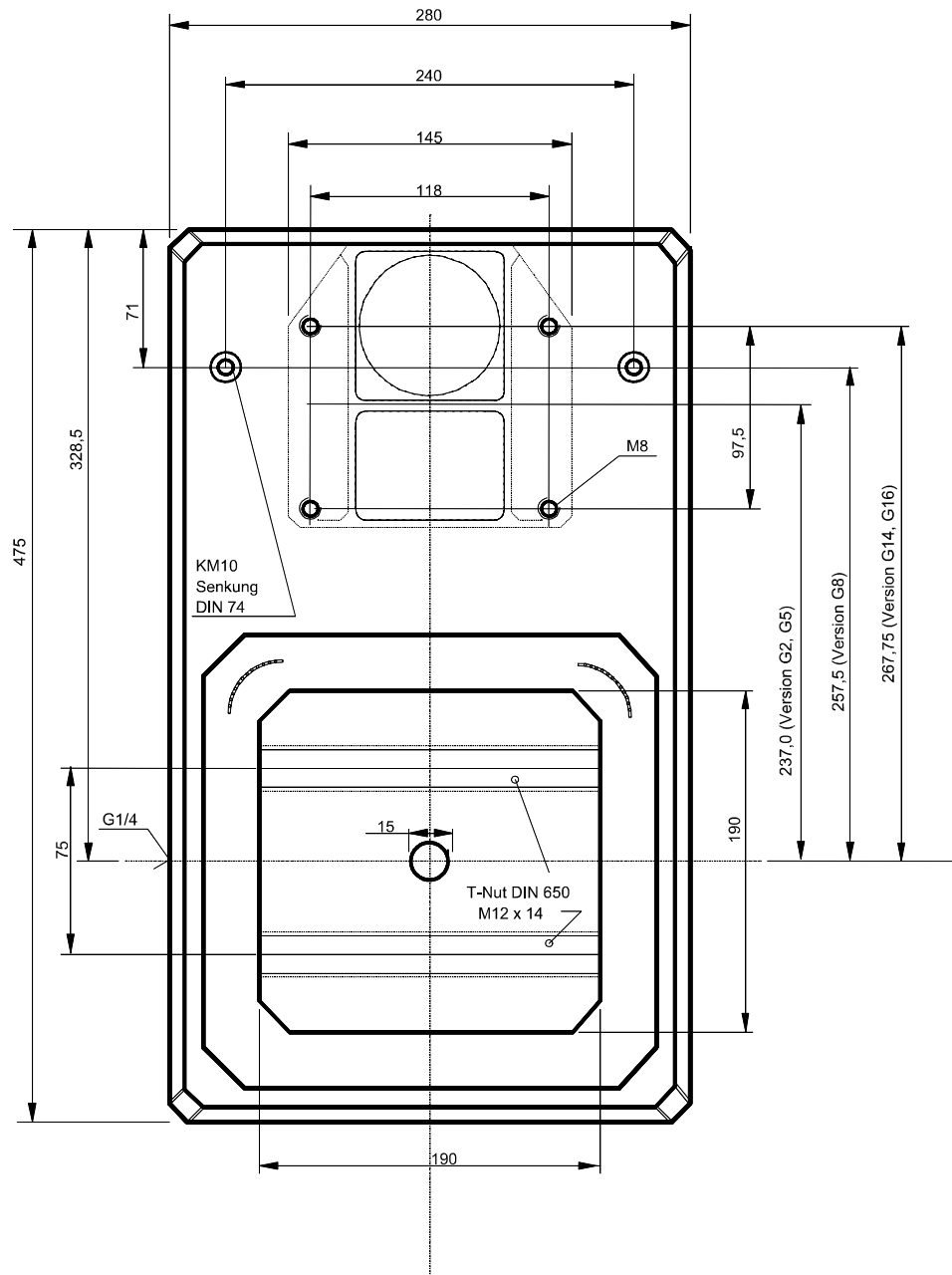


Fig 2-3 Dimensions, base plate thread tapping machine

Threaded connection G ¼ (PG6) for reassembly of lubricants.

## 2.2.2. Rear side of machine head megatap II / microtap II

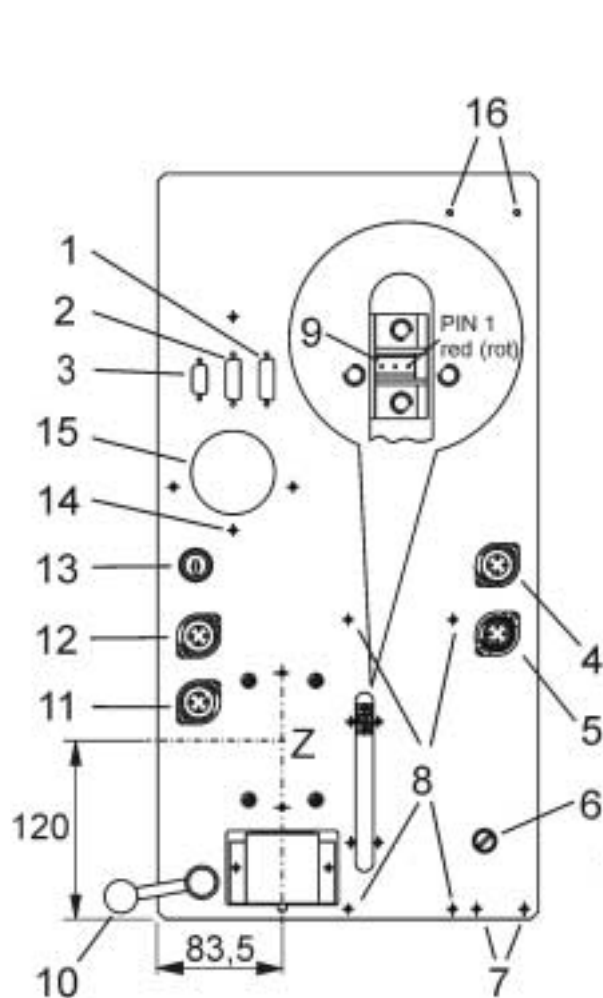


Fig. 2-4 Rear side of machine head megatap II

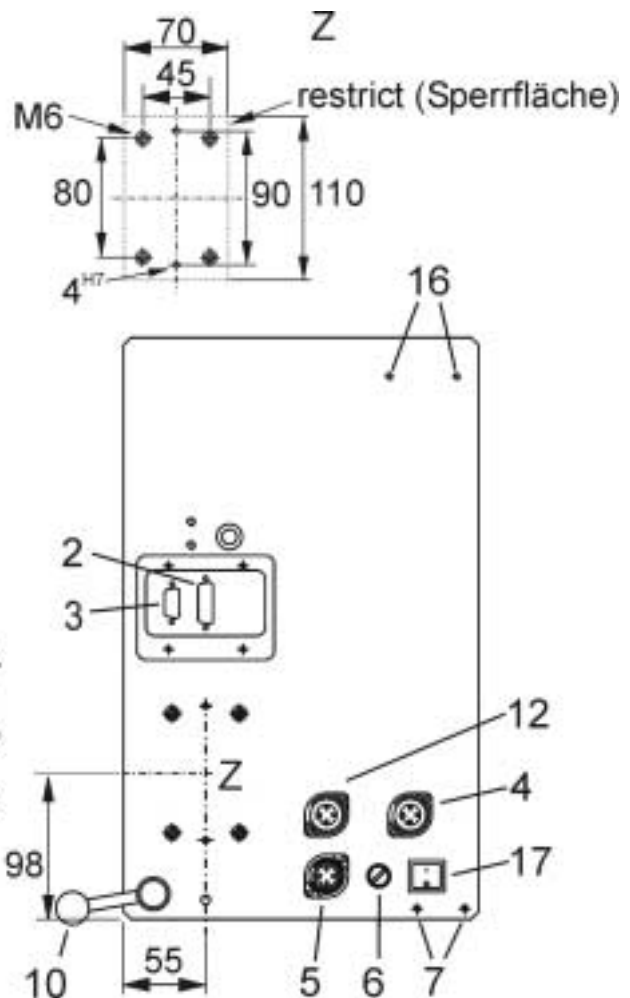


Fig. 2-5 Rear side of machine head microtap II

- |  |  |
|--|--|
| 1 Connection: ZAP                                  | 9 Receptacle: press sensor ZAP<br>PIN1 = red               |
| 2 Receptacle: I/O user interface (SPS)<br>(I/O)    | 10 Setting lever for retracting force<br>(counter balance) |
| 3 Receptacle: V24 (RS 232D) serial<br>interface    | 11 Receptacle: Operating lever                             |
| 4 Receptacle: lubrication unit (SME and<br>SPE)    | 12 Receptacle: Foot switch ZAP                             |
| 5 Receptacle: Main connection (230VAC<br>/ 50Hz)   | 13 Key switch (option)                                     |
| 6 Fuse: megatapII 16A / T<br>microtapII 3,15A / TT | 14 Zugentlastung für Leitungen                             |
| 7 SME connection (SME & SPE)                       | 15 Air intake hole for cooling fan                         |
| 8 ZAP connection (ZAP)                             | 16 signaltap connection                                    |
|  | 17 Mainswitch  |